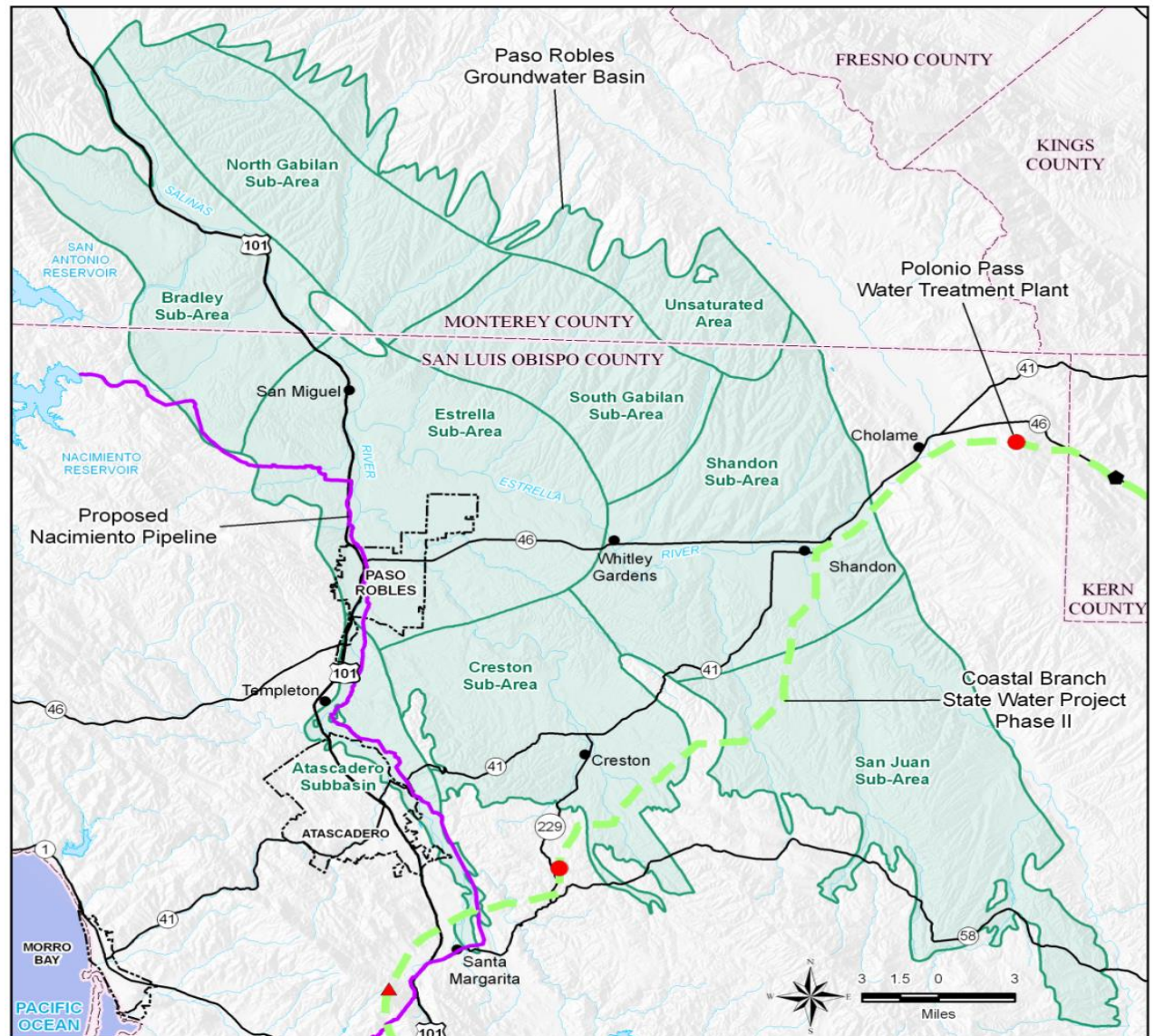


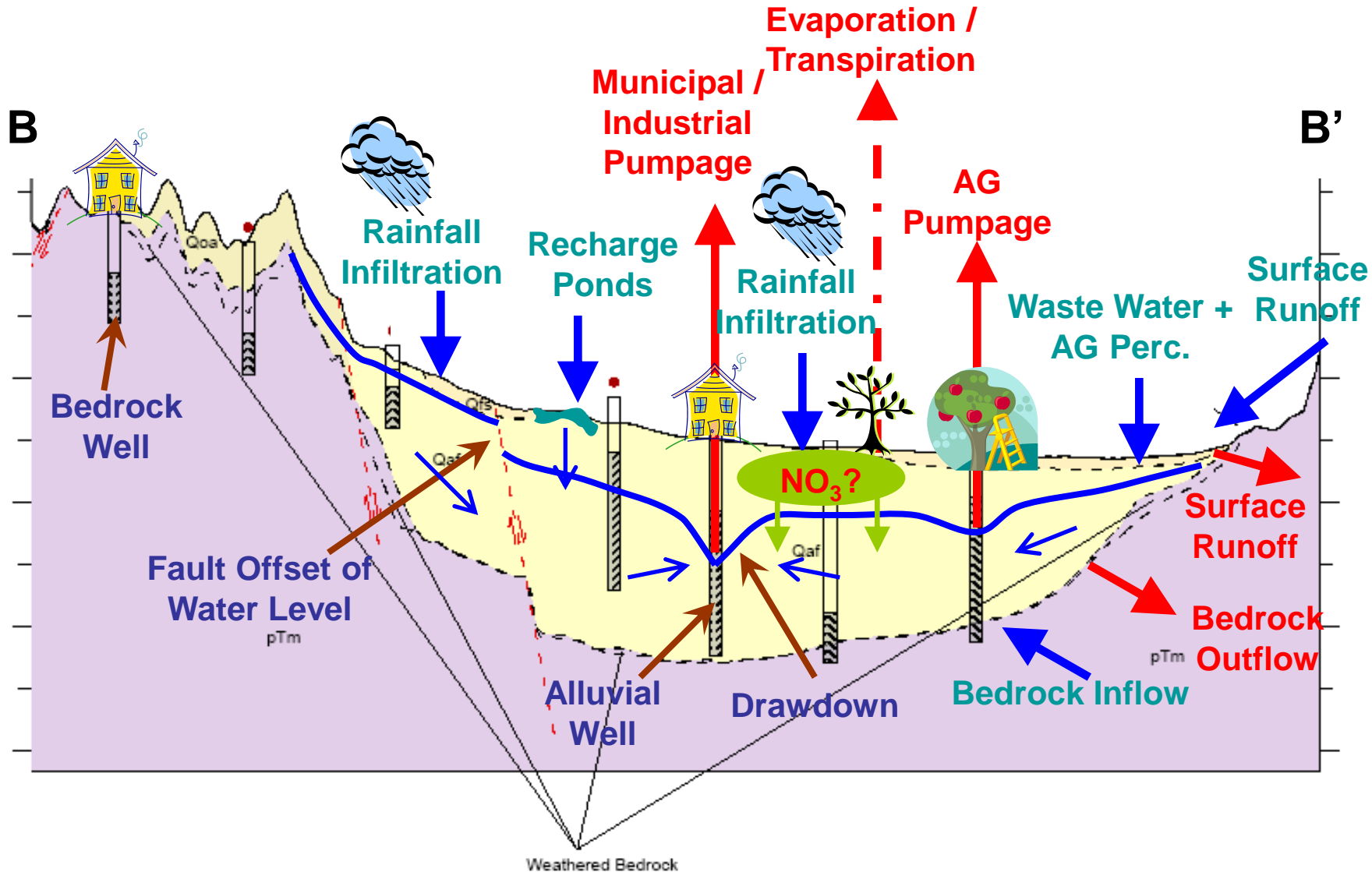
Paso Robles Groundwater Basin



- 800 square miles
- 500,000 acres



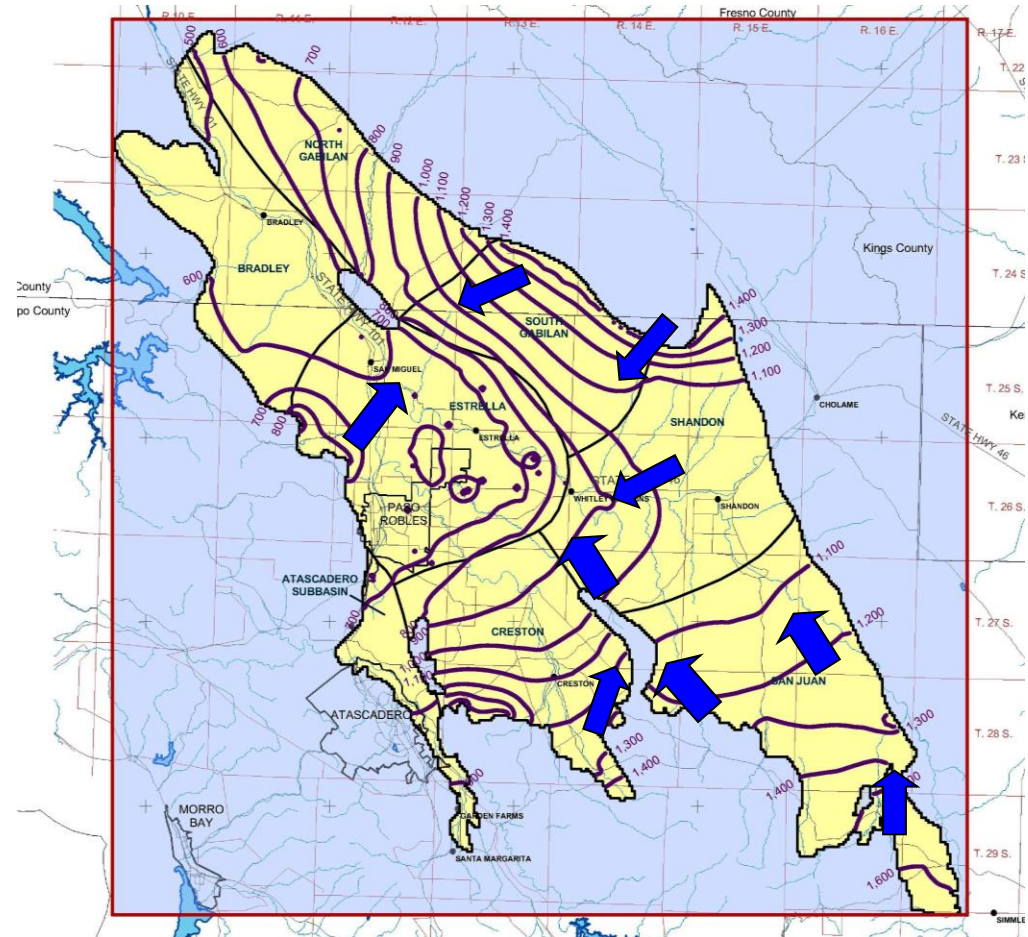
Basin Hydrogeology And Water Balance Conceptualization



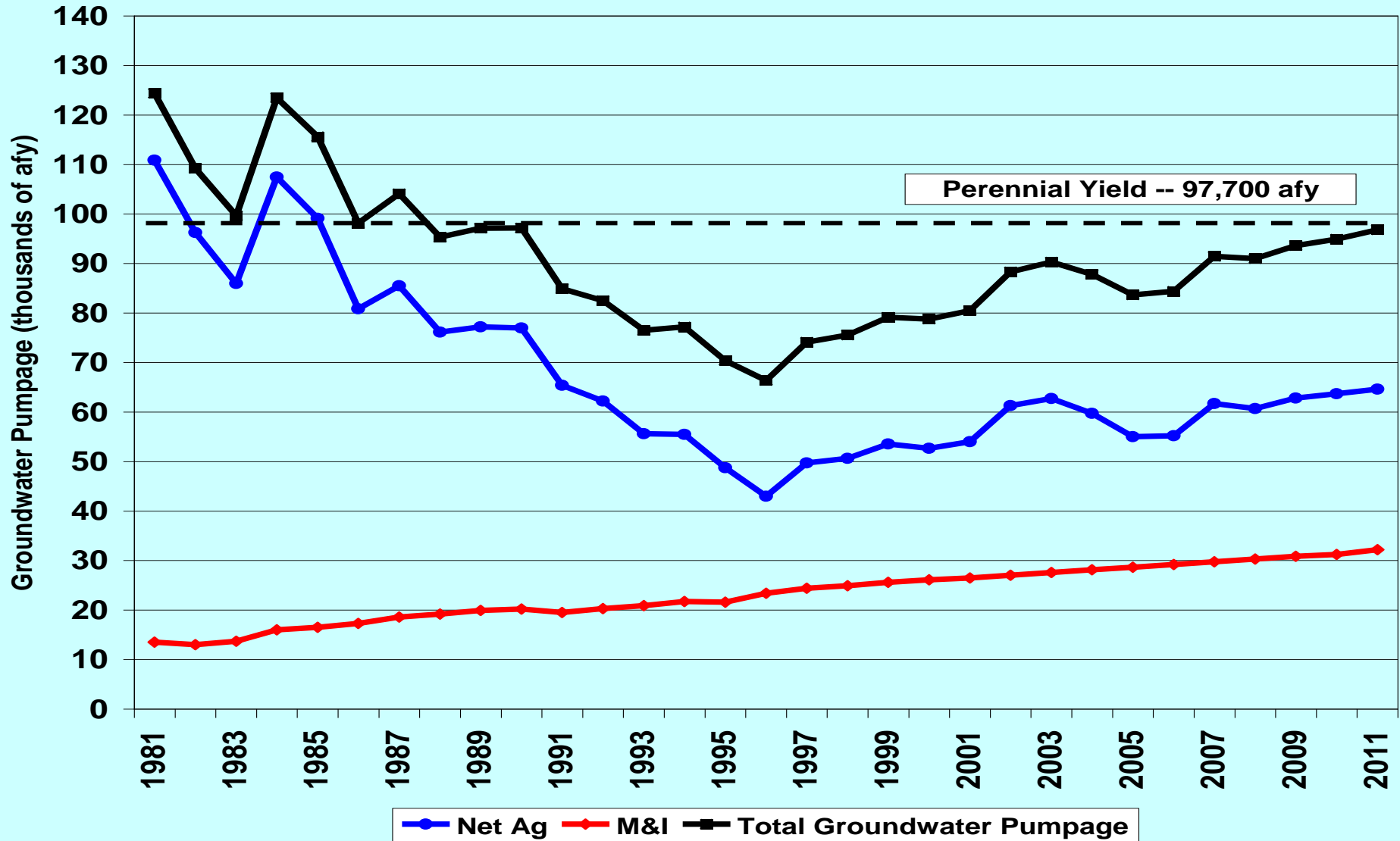
Basin Conditions



- Perennial Yield – (1997 data)
(the rate at which groundwater can be pumped from wells without decreasing water in storage)
 - 97,700 AFY
- Basin Pumpage – 96,800 AFY (2011)
- Agricultural Water Demand – 67,000 AFY (70% of basin pumpage)



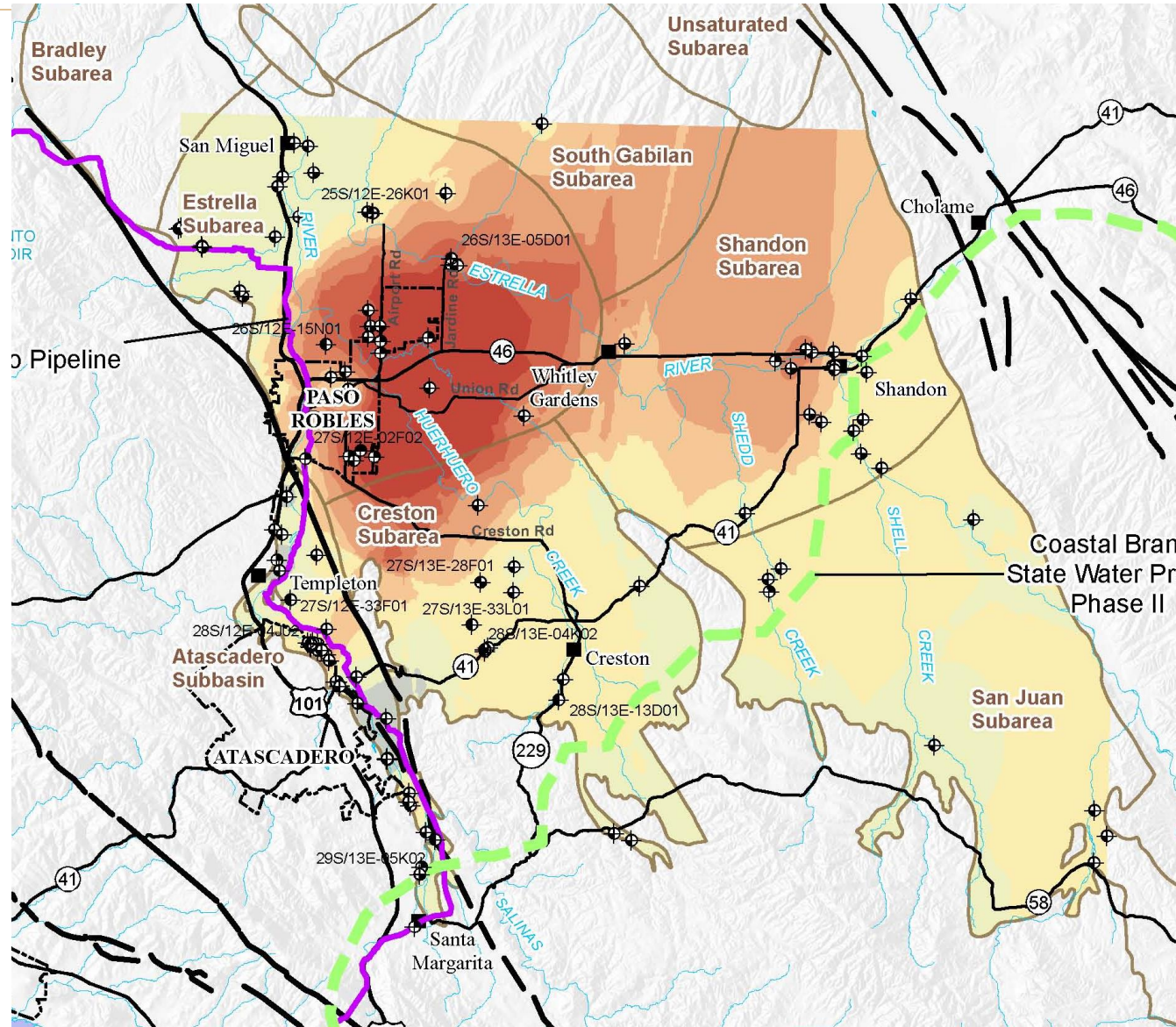
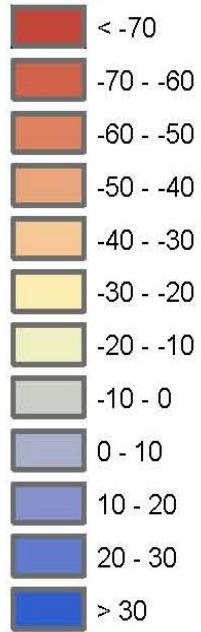
History of Groundwater Pumpage



Change in Groundwater Levels 1997 to 2010



Change in Groundwater Elevation



- *Conservation*
- *Land use restrictions (current County jurisdiction restricted to rural domestic)*
- *Desalination*
- *Reclaimed/Recycled water*
- *Water transfers*
 - Unallocated State Water
 - Salinas Dam
- *Retire undeveloped properties*

Availability of Supplemental Water



- Nacimiento Water
 - Total SLO County Nacimiento supply – 17,500 AFY
 - Lakeside deliveries and supply – 1,750 AFY
 - SLO County water project supply – 15,750 AFY
 - City of Paso Robles – 4,000 AFY
 - City of San Luis Obispo – 3,380 AFY
 - Atascadero Mutual Water Company – 2,000 AFY
 - Templeton Community Services District – 250 AFY
 - CSA 10A (Cayucos) – 25 AFY
 - Total Commitment – 9,655 AFY
 - Available (uncommitted) – 6,095 AFY

Additional Imported Water Supply Options



- *The A-word
(adjudication)*

Obstacles / Barriers to Solutions



- Cost (desalination, recycled water, water transfers, retire undeveloped parcels)
- Lack of regional jurisdictional agency
- California water law
 - Senior rights to overlying landowners
 - Junior rights to cities / water purveyors
- County “Right-to-Farm”
- Lack of awareness of problem
- Self-interest

Important Recent Actions

- *Resource Capacity Study, Water Supply in the Paso Robles Groundwater Basin (SLO County Planning, August 2010)*
 - Concluded that Basin was at or near perennial yield
 - Recommended that Board of Supervisors declare the Basin to be in a “Level of Severity III”
- *Declaration of “Level of Severity III” (Board of Supervisors, February 2011)*

Important Recent Actions



- *Paso Robles Basin Groundwater Management Plan* (GEI Consultants and Fugro, March 2011)
- *Development of Paso Basin Groundwater Management Blue Ribbon Steering Committee* (April 2011)
- *Amendment of County Land Use Ordinance* (Board of Supervisors, September 2012)

Important Recent Actions



- *Amendment of County Land Use Ordinance* (Board of Supervisors, September 2012)
 - Requires new development to offset new water demand for non-ag purposes
 - Requires that offsets conserve water used for non-ag purposes
 - Prohibits general plan amendments that would result in a net increase in water demand for non-ag purposes
 - Prohibits the approval of new land divisions
 - Includes mandatory conservation measures for outdoor water use